

# PRODUCT DATA SHEET

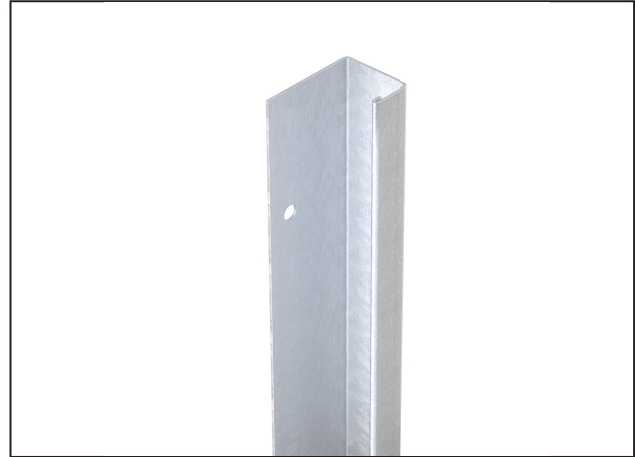
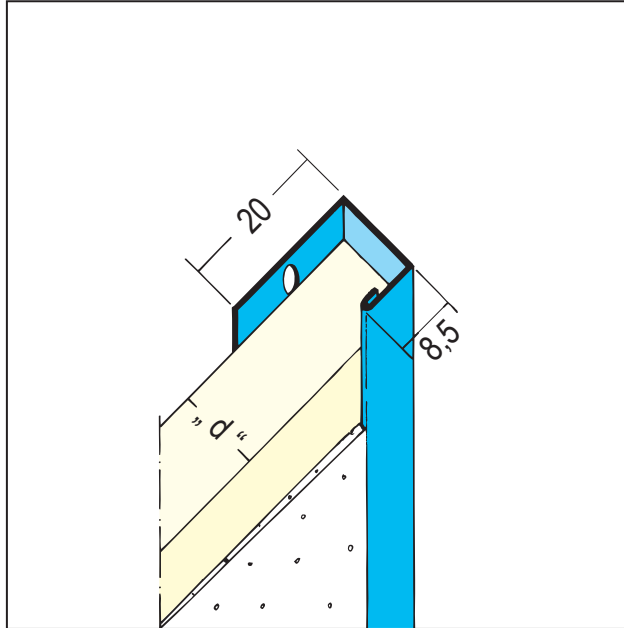
Edge profile for dry lining

12,5 mm PB

Item no. 1121



Status: 12.04.2024 | 12:04



<b>Designation</b>	Edge profile for dry lining 12,5 mm PB
<b>Description</b>	Clip-on profile made of galvanised steel sheets for various plasterboard thicknesses, connections and edges.
<b>Product area</b>	Internal construction
<b>Product category</b>	Filler profiles
<b>Plaster thickness</b>	1 mm
<b>Material</b>	Galvanised steel, with white basic coating
<b>GK/Plate</b>	12,5 mm
<b>Standard EN</b>	EN 14353
<b>Product length</b>	250 cm; 300 cm
<b>Reaction to fire (R2F)</b>	E
<b>Productcolor</b>	10, white
<b>Treatment</b>	Profiles do not plaster over.
<b>Packaging Unit</b>	25 PCS / 70 BUN

This product data sheet corresponds to the current state of development of our products and loses its validity upon publication of a new edition. Make sure you are using the latest edition of this information. Warranty and liability are based on delivery according to our general Terms and conditions. Please observe the application assembly and storage guidelines.

All statements without guarantee. Reserve technical changes. Product illustrations may differ from the delivery product. Tender specifications, installation instructions and performance declarations (if required by law) can be found on our homepage. Please respect the environment for a proper disposal!